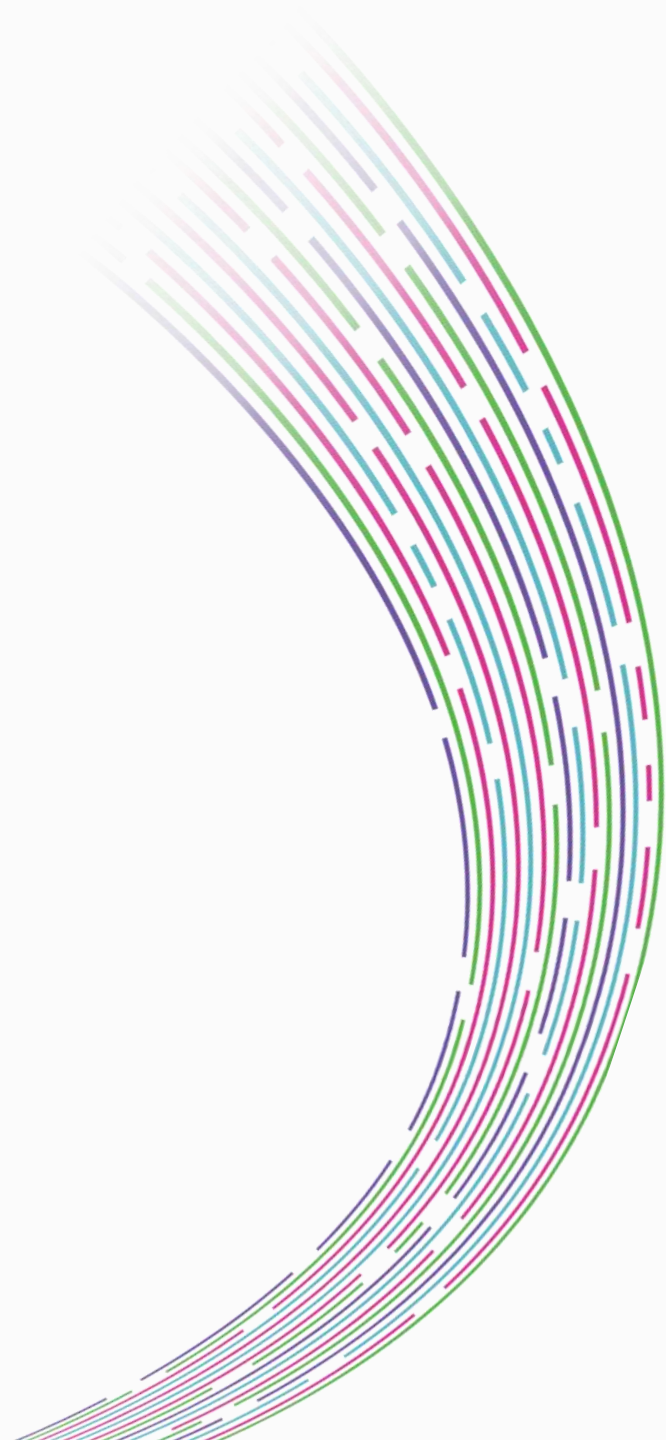


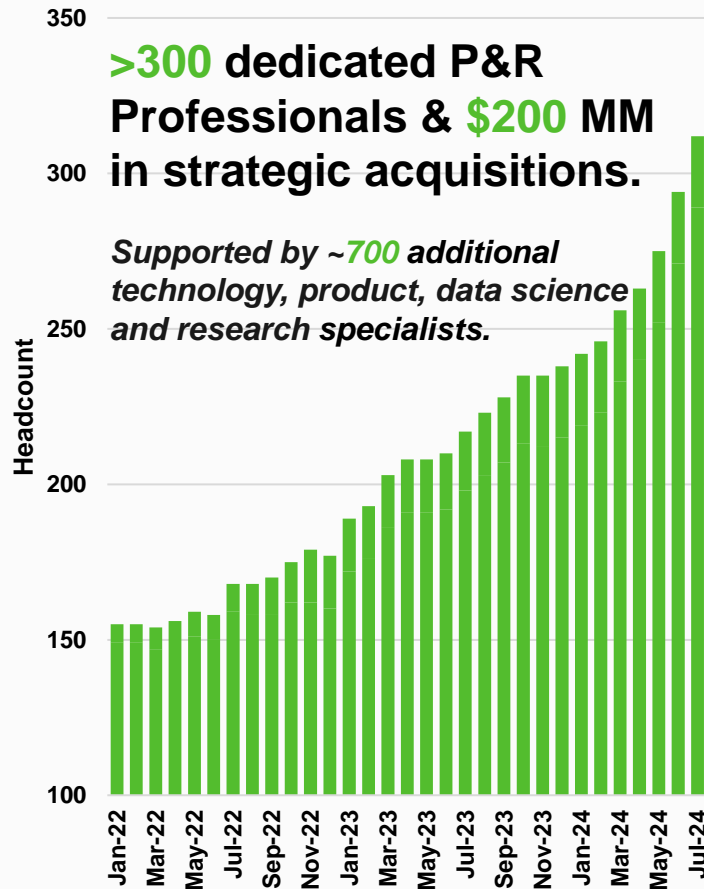


Power & Renewables



Fastest Growing Platform in P&R

Take Advantage of Our Investments in Innovation and Expertise



23 GW

IN SOLAR, WIND,
STORAGE
PROJECTS

Brought online by
Enverus clients in
2024 (266 projects)

44%

OF US POWER
CAPACITY

Brought online by
Enverus clients in
2024

9x

APPROVAL
RATE

Interconnection
queue success rate
of Enverus clients
over last 5 years*

85%

TIME REDUCTION
IN PV LAYOUT

750K+ PV designs
generated with
Enverus'
RatedPower

50.5%

LARGER CAPACITY

Solar and Wind
projects brought
online by Enverus
clients*

20%

MORE BUILDABLE

Enverus client
projects were on
more buildable land
in 2024**

\$9/MWh

HIGHER

Solar Weighted LMP
at nodes for Enverus
client projects over
last 5 years*

500MW+

AVG INJECTION
CAPABILITY

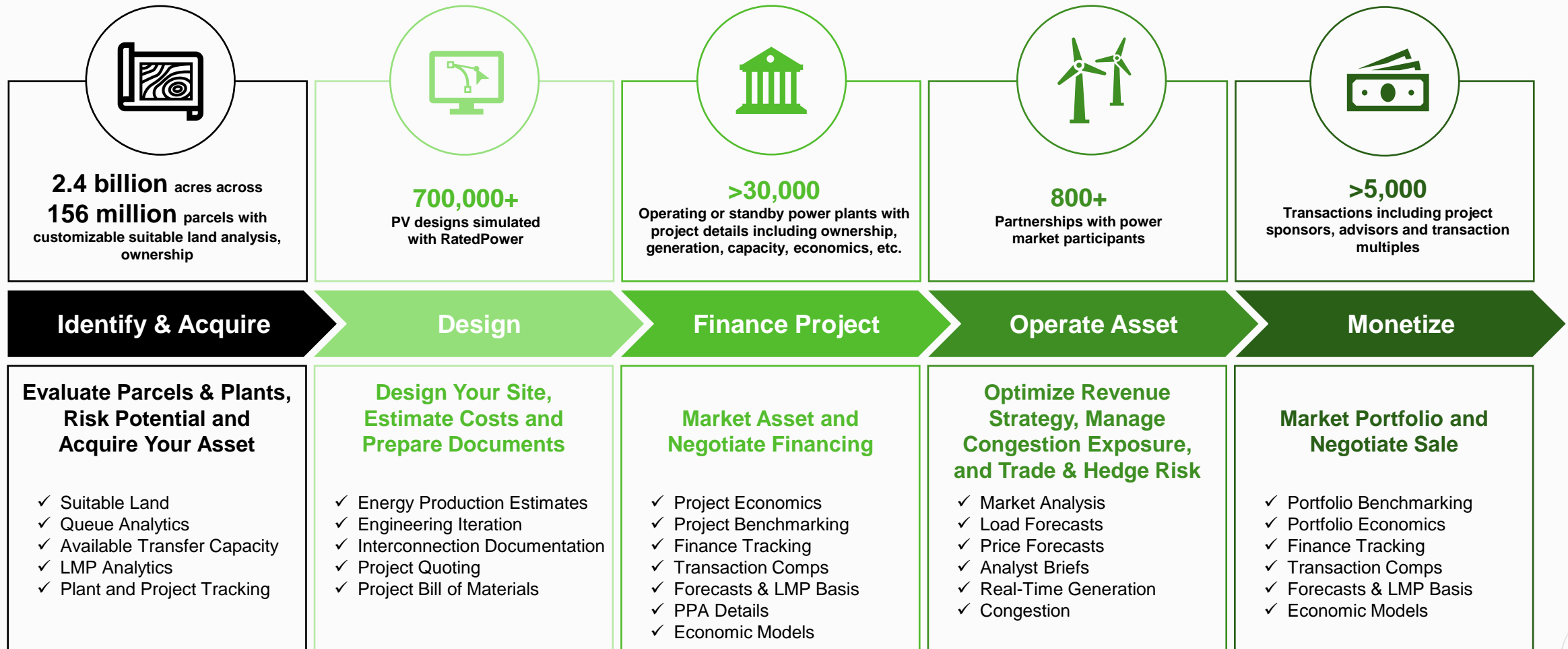
Enverus client
projects planned to
interconnect at POIs
over last year*

* Versus Non-Enverus client projects **Based on the presence of slope, canopy, wetlands, and floodplains

1,700 Employees delivering 26 Years of Proprietary Data, Analytics and Intelligence

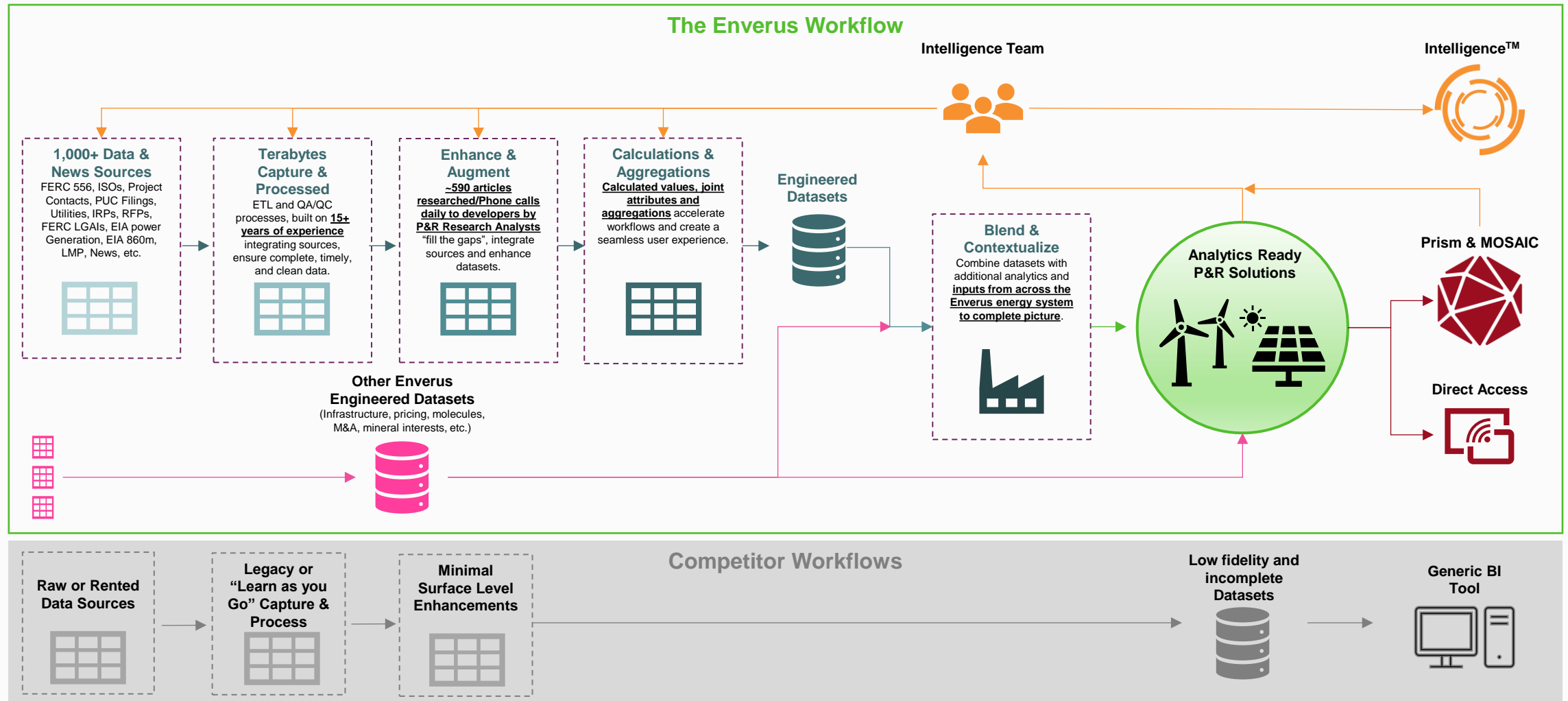
“Dirt to Dollars”

End-to-End Partner Turns Months into Minutes



Not all Data is Created Equal

Do Not Be Fooled by Surface Level Data Displayed in Off-the-Shelf BI Tools

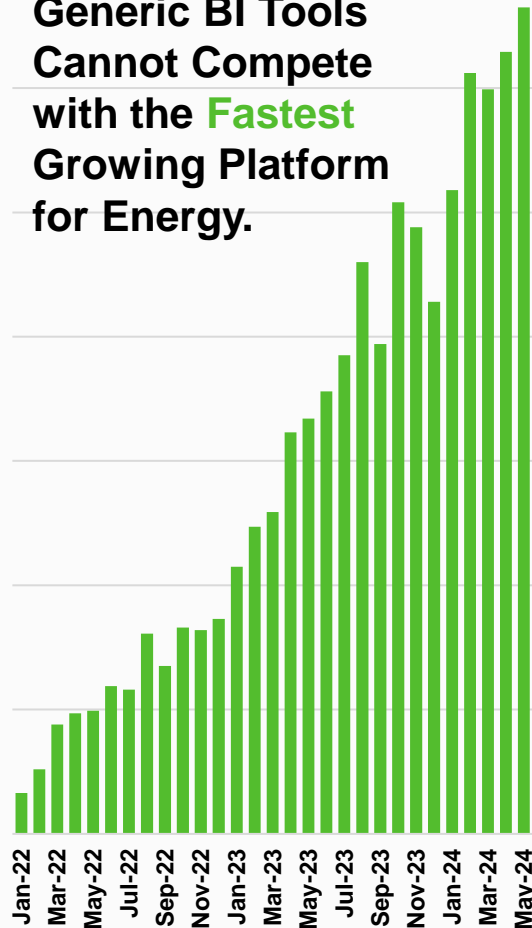


Not all Platforms are Created Equal

\$500 Million Invested – End-to-End Platform Designed by Energy Professionals for Energy Professionals

Generic BI Tools
Cannot Compete
with the **Fastest**
Growing Platform
for Energy.

Prism Usage



Energy specific
analytics and
visualizations
immediately accelerate
your workflows.

Your data is protected
with **best in class**
security.



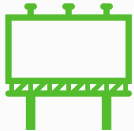


Integrate your
data/maps sources into
a shareable cloud
based workbooks.

Customizable
assumptions in
proprietary advanced
modelling modules

Evergreen Data &
Analytics Streams
covering the entire
energy system

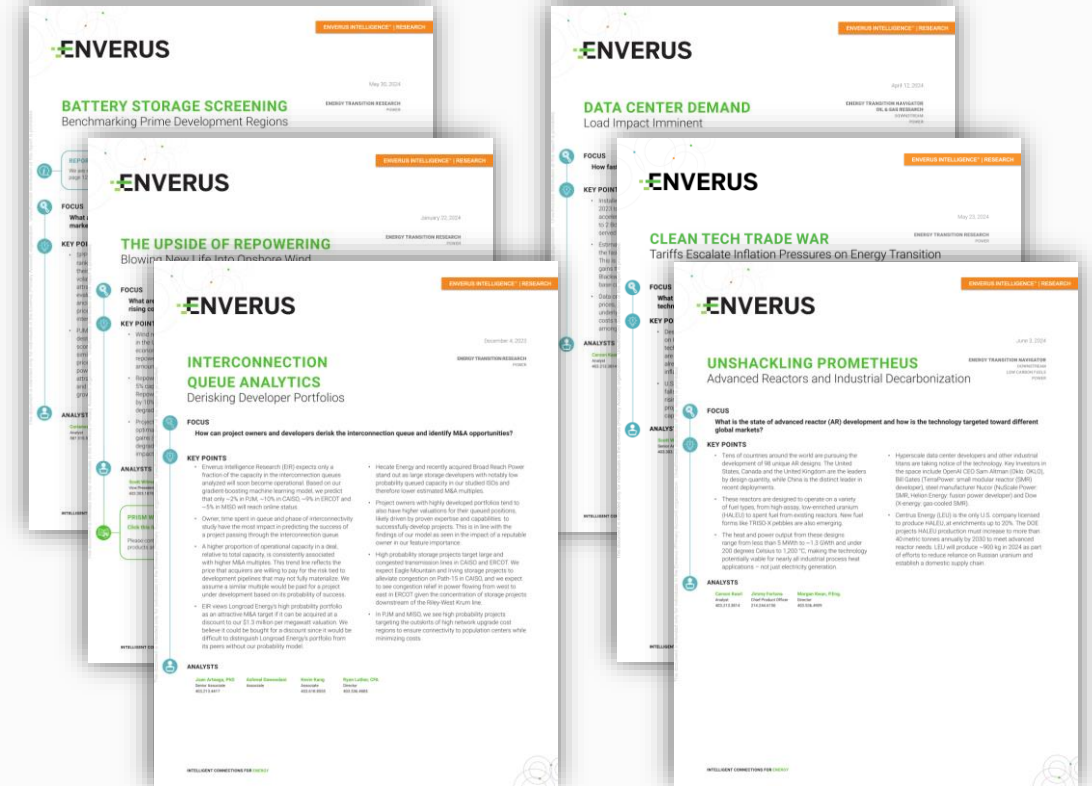
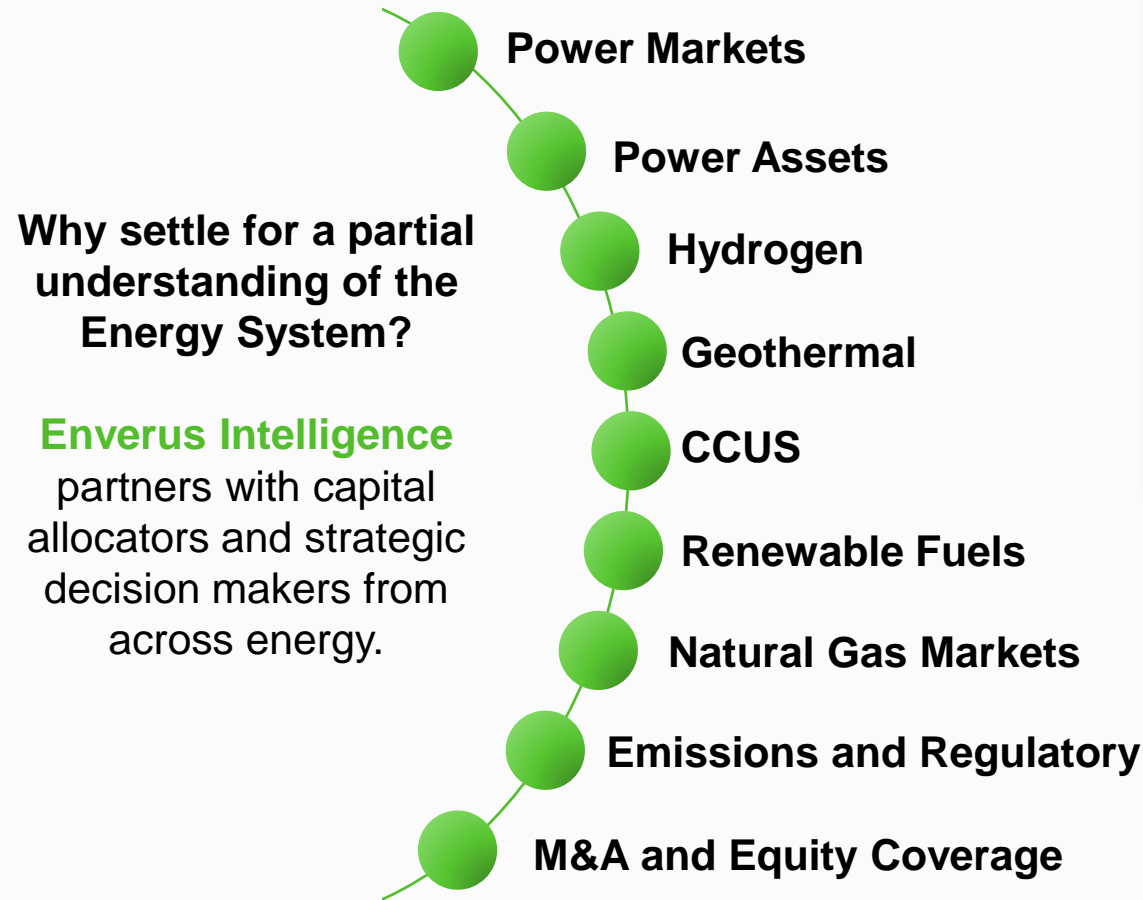
Avoid Costly Mistakes

Missteps Slow You Down and Create Blind Spots You Cannot Afford

Potential Mistake	Customer Feedback
 Build Your Own Tools Instead of Partnering with a Technology Leader	"... I'm really excited about what this potentially could unlock for us.. We haven't even started to contemplate some of the use cases where you guys are really good... why would we go invest our shareholder's money to build a capability that already exists? No. We can partner with you."
 Choose Low Fidelity, Incomplete datasets Instead of Complete & Engineered Data	"Unbelievably fantastic having all these data in one place. So much information"... "Blown away. I've been in the power space for 30 years and I've never seen anything like this." "Shocking... I can really drill deep, and gain hyper-specific intel"
 Choose a Generic BI Tools Instead of a Energy Specific Platform	"Prism provides all the intel needed for a first pass at evaluating the potential of a renewable power plant site. In 2023, they were able to successfully bring online and sell of 7 different batteries, and noted that "Prism was directly related to success". They've been able to evaluate 300+ sites, with another 5 projects totaling 1.8 GWh of capacity under development right now through 2024. "Everything we touch, Prism played some part in."
 Rely on DIY Data Connections Instead of Prepopulated Analytics	"Prism allows us to take out the human error aspect of our data entry process. We are currently leveraging more than 34 data points from the platform and see Enverus as a crucial tool as we grow in our business"
 Procure from Vendors Instead of being Partnered With An Advisor	"Having your team accept unique research requests for our team is incredibly valuable to us. We have teams that are sifting through your data and it's not a, "Hey Enverus doesn't have that", it's a, "Hey, let's ask Enverus if they can look into that". We appreciate that about our partnership and the support you provide".

Trusted Advisors Covering All of Energy

Our Intelligence Team Creates, Uses and Enhances our Analytics Solutions



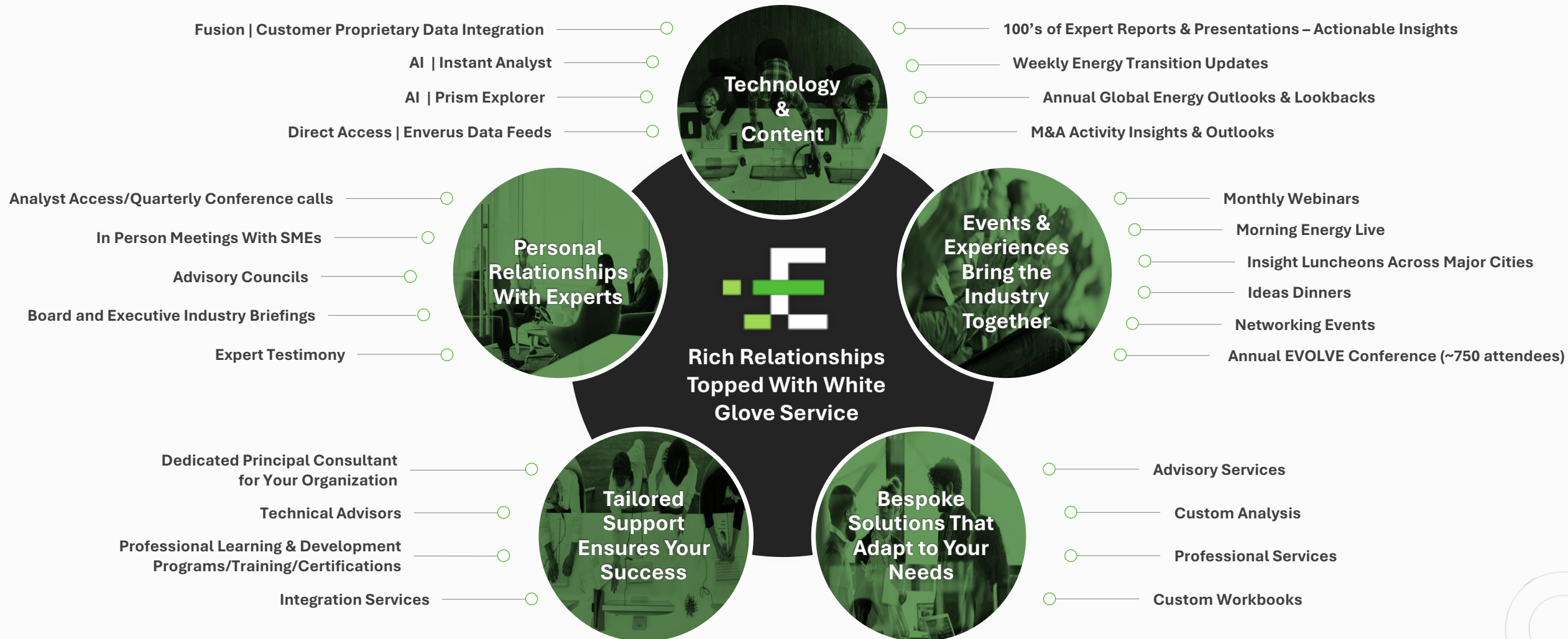
Engage With Our Experts Anytime

Instant Analyst
GenAI Responses Fueled
by Published Research

Analyst Access
Leverage the SME's behind the
Insights & Analysis

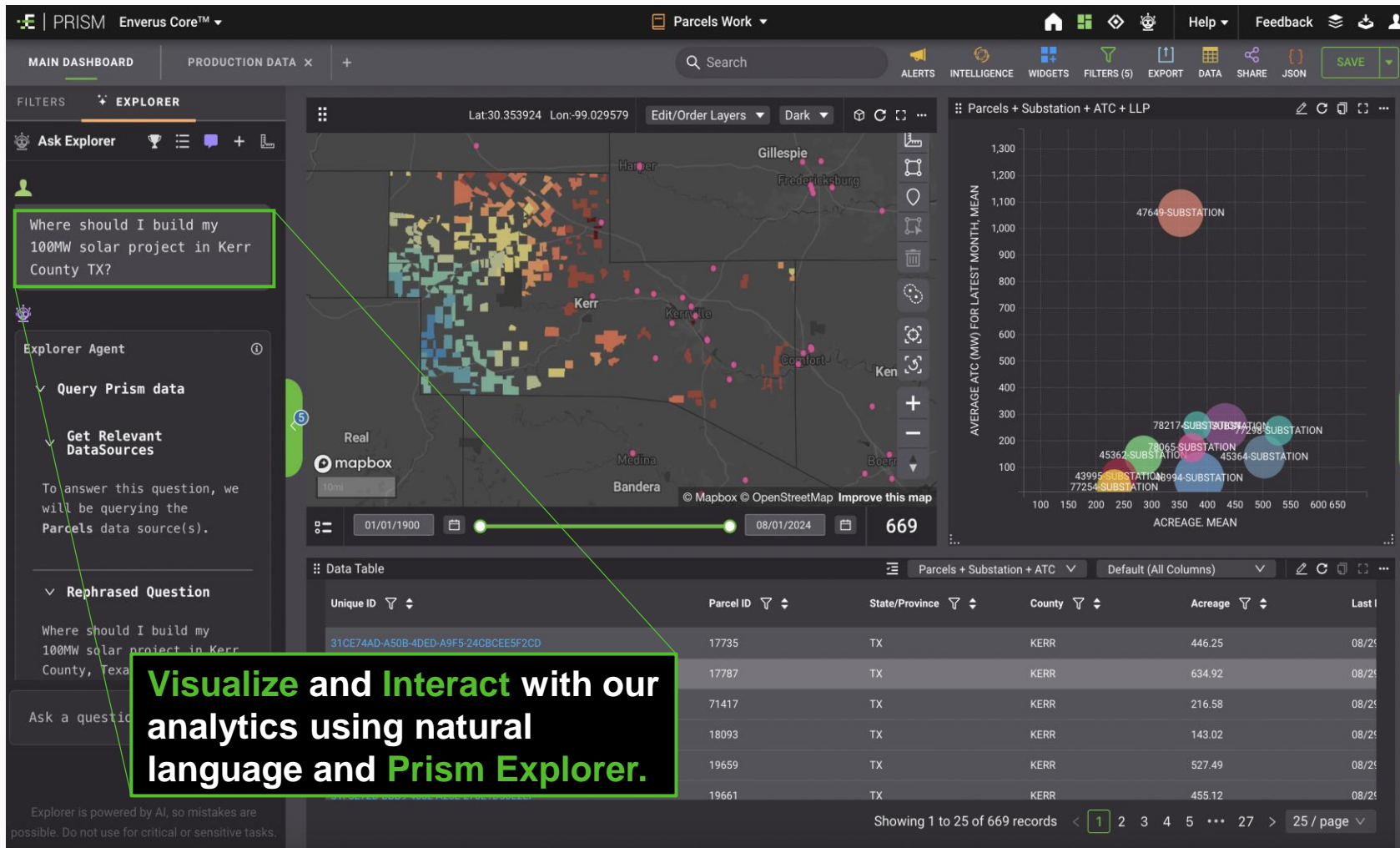
Your Trusted Partner with 300 Experts By Your Side

More than just Data, Analytics and Software – We are an Extension of your Team



Interact with Intelligence & Analytics With Generative AI

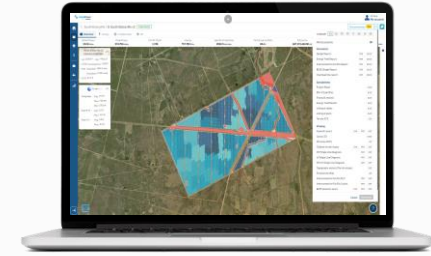
Natural Language Prompting to Create On-Demand Insights and Visual Analytics



Leverage 20 years of research insights with Instant Analyst'. fully referenced responses

Optimize Design While Saving Time

Drive Efficiency: Utility-Scale Design at Lightning Speed



Traditional project design processes are slow, unoptimized, and managed by specialized departments.

EFFICIENCY

- Screen and compare projects fast.
- Forecast project yield and revenues.
- Produce bill of materials and costs.
- Generate engineering documents.

85%
LESS TIME

on time to initial design.*

"Speed is a competitive advantage and our resources are constrained. With this we've been able to within hours, not days and weeks, turn around design documents to stakeholders, landowners, partners, and engineers to get through our regulatory interconnect process and move projects further, faster."

- Chief Engineer

"For us to generate our outputs, such as PV layouts, we were able to cut times as much as 95%."

- VP of Engineering

OPTIMIZATION

- Sensitize design parameters.
- Understand engineering limitations.
- Test equipment selection options.
- Compare outcomes across KPIs.

+20%
PROFITABILITY

on optimized PV designs.^

"The main benefit is the ability to run dozens of configurations for a project in a few minutes and compare. A reduction of time and effort translates into decreased cost and increased benefits."

- Head of Engineering

"If I want to change the model or equipment, it takes 2-3 minutes to change that. So, that helps us and the developers to deliver results much faster to the customers or investors."

- Head of Engineering

EASE-OF-USE

- Single solution for a complex problem.
- Streamlined for key deliverables.
- User-friendly for all skill levels.
- Reliable results regardless of expertise.

30
MINUTES

to design, even for non-technical users.^

"Since it's very friendly to use, any person on our team, even if they have no experience in engineering, can in a couple of minutes just develop a draft proposal for the profitability analysis."

- Sr. Design Engineer

"It combines the functionality of multiple softwares that solar engineers would be using. The fact you can get yield analysis, bill of materials, terrain analysis, and layout from a single tool simplifies our workflow."

- Head of Engineering

*Based on scenario on project parameters. ^Based on customer feedback.

Get Actionable Insights Before Anyone Else

Drive Returns: Explain the Past, Understand the Present, Forecast the Future

ANALYTICS

ENVERUS is the ONLY provider of **real-time constraint driver analysis** using power flow fundamentals to decompose and quantify the impacts of transmission outages, generation, and load.

Alternatives rely on laborious backward-looking analysis and trade knowing you have a blind spot in your analysis.

*"This fills in a huge gap in our analysis."
- Head of Trading*

FORECASTS

ENVERUS is the ONLY provider with a **25+ year track-record** of forecasting load, renewables, congestion, and prices more accurately than the ISOs.

Alternatives expect you to build and maintain costly and time-consuming internal models or rely on unproven, cut-rate forecasting solutions.

*"We can't not have it. They are the market standard."
- Sr. Analyst*

EXPERTISE

ENVERUS is the ONLY provider of daily analysis and real-time alerting on all the markets you trade from experts with **10+ years of experience** each.

Alternatives require you to spend valuable time on conducting own market analysis or rely on reporting from inexperienced analysts.

*"I was tired of talking to kids fresh out of school. Talking to people that have actually worked in [market] is refreshing."
- Lead Trader*

Market-leading real-time generation and transmission coverage across ERCOT, SPP, MISO, and PJM.

3x-5x
POWER PLANTS
MONITORED*

560+
GW
MONITORED

42K+
CONSTRAINTS
MONITORED

*~1,300 power plants versus other vendors' publicly disclosed coverage.

*"All the generators I want to see are in there. The data for [units] is great, whereas [competitor]'s data for it is inaccurate and unreliable."
- Virtual Trader*



Not All Forecasts Are Created Equal

Better, Faster Decisions: Quality Inputs, Differentiated Modeling, & Transparency

Fully-automated production cost model with scenarios and full transparency on assumptions built by experts, each with 10+ years of industry experience.



PRICES

- ✓ **Production-cost modeling** replicating the **same methodology as the ISOs**.
- ✓ **Decompositions quantifying the impacts of congestion** on all pricing nodes across the grid.
- ✓ **Nodal day-ahead and real-time as well as ancillary services price forecasts** going out 7-14 days.
- ✓ **ONLY forecast on the market with hourly updates** to include the most up-to-date changes to inputs and conditions.



LOAD

- ✓ Proven forecast with a **25+ year track record** of **forecasting load better than the ISOs** and setting the **market standard for accuracy**.
- ✓ Utilizes a locally-optimized **ensemble of weather inputs** from **four of the market-leading providers**.
- ✓ **Sub-hourly updates** that account for up-to-the-minute weather and behavioral patterns ensure the timeliness and accuracy of forecasts.



CONGESTION

- ✓ **Monitored and post-contingency constraint flow forecasts** utilizing a **full-contingency analysis** for the whole grid.
- ✓ The **ONLY forecasted constraint-driver decompositions** on the market that **quantify the impacts of outages, generation, and load on flows**.
- ✓ **Topology-based shift-factors** and **hourly shadow price forecasts** to enable the most confident trade construction and sizing.



GENERATION

- ✓ **Farm-level solar and wind forecasts** for all assets **based on physics-based modeling**, with **leading speed-to-market and accuracy**.
- ✓ **Wind and solar curtailment forecasts** based on the modeled interaction of **resource potential and prevailing grid-conditions and congestion**.
- ✓ **Market-leading monitoring of real-time generation** informing forecast inputs with **up-to-the-minute outages and starting conditions**.

300+

Market participants use

ENVERUS

forecasts incl. traders,
utilities, ISOs, and asset
managers.

“We are very impressed with the forecasts, in particular the supply curve forecast and decomposition analysis.”

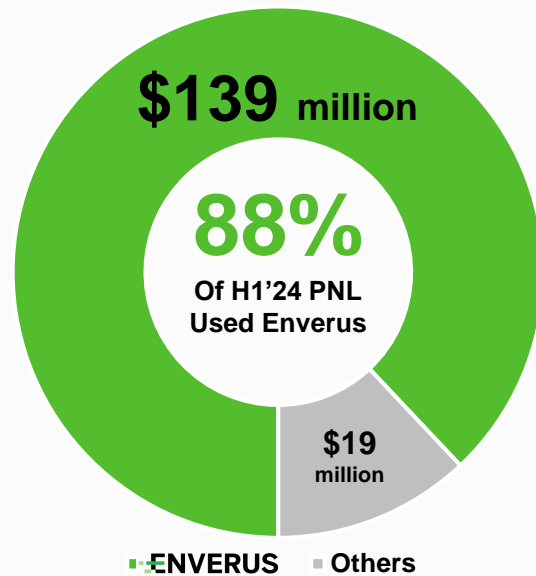
– Asset Manager

“We’ve found a ton of uses for your [market] production cost model data streams and can’t wait to use more.”

– Lead Trader

Built For Purpose, One-Of-A-Kind Solution

Drive Returns: The Game Changer for FTR and Term Trading



19 of 20
TOP FTR TRADERS

By PnL use
ENVERUS's solution.*

"It has been a go-to tool for us. It allows us to consider a range of possible outcomes in a way that no other weather/load/renewable forecasting service has, while the team behind the product remains accessible and helpful."

– FTR Trader

"The other FTR traders swear by this product, so I thought I should use it too."

– Portfolio Manager

Get the ENVERUS Advantage



ENVERUS delivers the ONLY solution that enables the ability to **analyze all state estimator cases**, including bus-level loads, mapped to all the market data and project queues.



ENVERUS offers the ONLY **mid-term, farm-level, hourly renewables forecasts** in the industry, based on **physics-based modeling** and probabilistic weather scenarios.



ENVERUS produces the ONLY **bi-weekly, 90-day market outlook reports** written by and analyst access to **industry experts with 10+ years of experience each**.



ENVERUS is the FASTEST solution for **forecasting the impacts of outages** on all aspects of the grid, and the associated **topology-based shift factors**.

*PNL metrics based on ERCOT H1'24 results for speculative trader cohort.